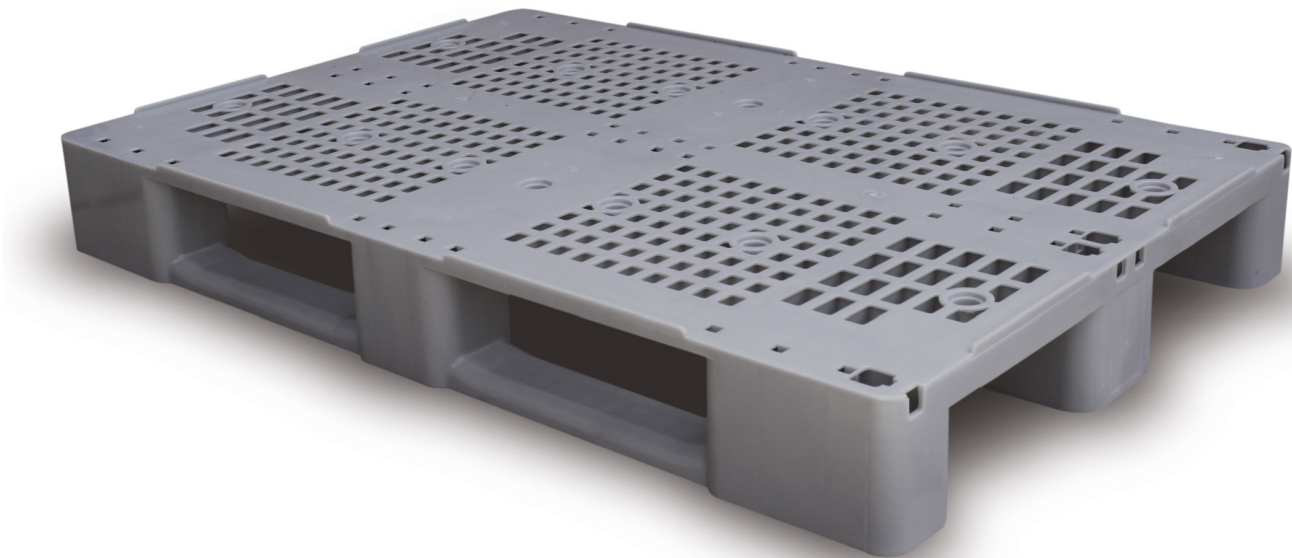


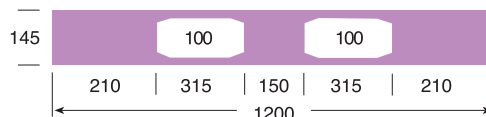
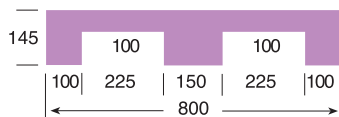
PALLET C1 AND C3

1200x800 mm.
1200x1000 mm.



C1 PALLET C1

Support surface	Dimensions	Weight	Color	Material	Dynamic load	Static load	Racking load
3 runners	L.1200; W.800; h.145 mm.	11.600 kg.	■	HDPE	1000 kg.	4000 kg.	500 kg.

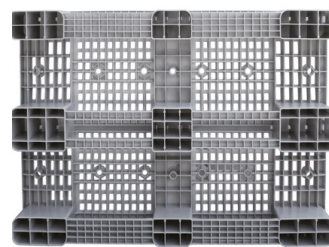
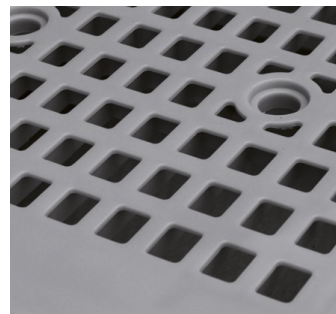


C1-3R PALLET C1 WITH 3 INTERNAL METAL REINFORCEMENTS

Weight	Dynamic load	Static load	Racking load
13.500 kg.	1250 kg.	5000 kg.	1000 kg.

C1-4R PALLET C1 WITH 4 INTERNAL METAL REINFORCEMENTS

Weight	Dynamic load	Static load	Racking load
14.200 kg.	1500 kg.	5000 kg.	1250 kg.



Possibility to insert 3 or 4 metal reinforcements for a major load capacity in rack up to 1250 kg.

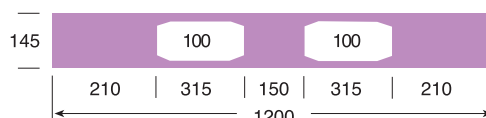
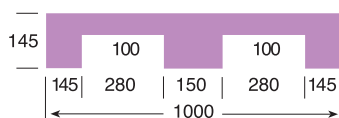
Optional anti-slip plugs available for a safe transport.

Perforated surface for easy handling and cleaning.

Standard rims of 7 mm. on the deck and optional of 22 mm. inside and outside the deck for a better safety of the load.

C3 PALLET C3

Support surface	Dimensions	Weight	Color	Material	Dynamic load	Static load	Racking load
3 runners	L.1200; W.1000; h.145 mm.	13.000 kg.	■	HDPE	1000 kg.	5000 kg.	500 kg.



C3-3R PALLET C3 WITH 3 INTERNAL METAL REINFORCEMENTS

Weight	Dynamic load	Static load	Racking load
15.000 kg.	1250 kg.	5000 kg.	1000 kg.

C3-4R PALLET C3 WITH 4 INTERNAL METAL REINFORCEMENTS

Weight	Dynamic load	Static load	Racking load
15.600 kg.	1500 kg.	5000 kg.	1250 kg.